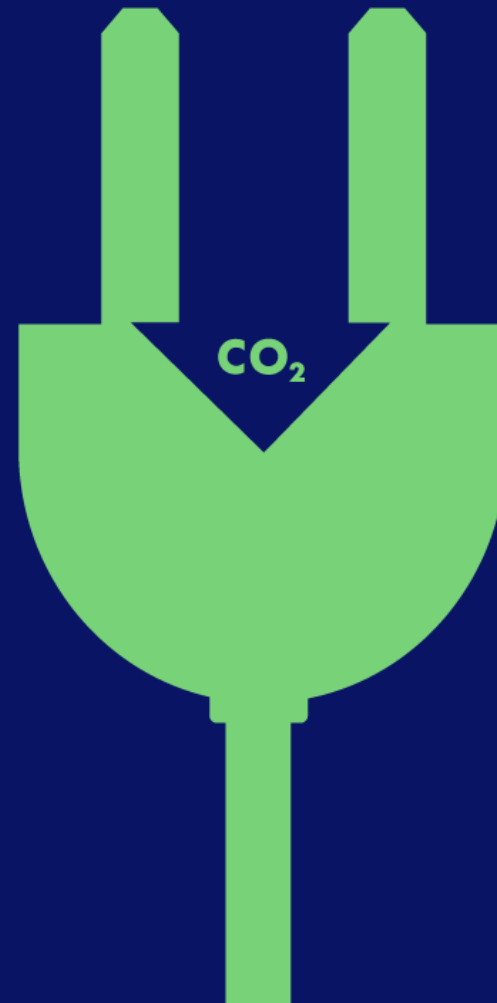


drax

BECCS by Drax

Capturing carbon opportunities

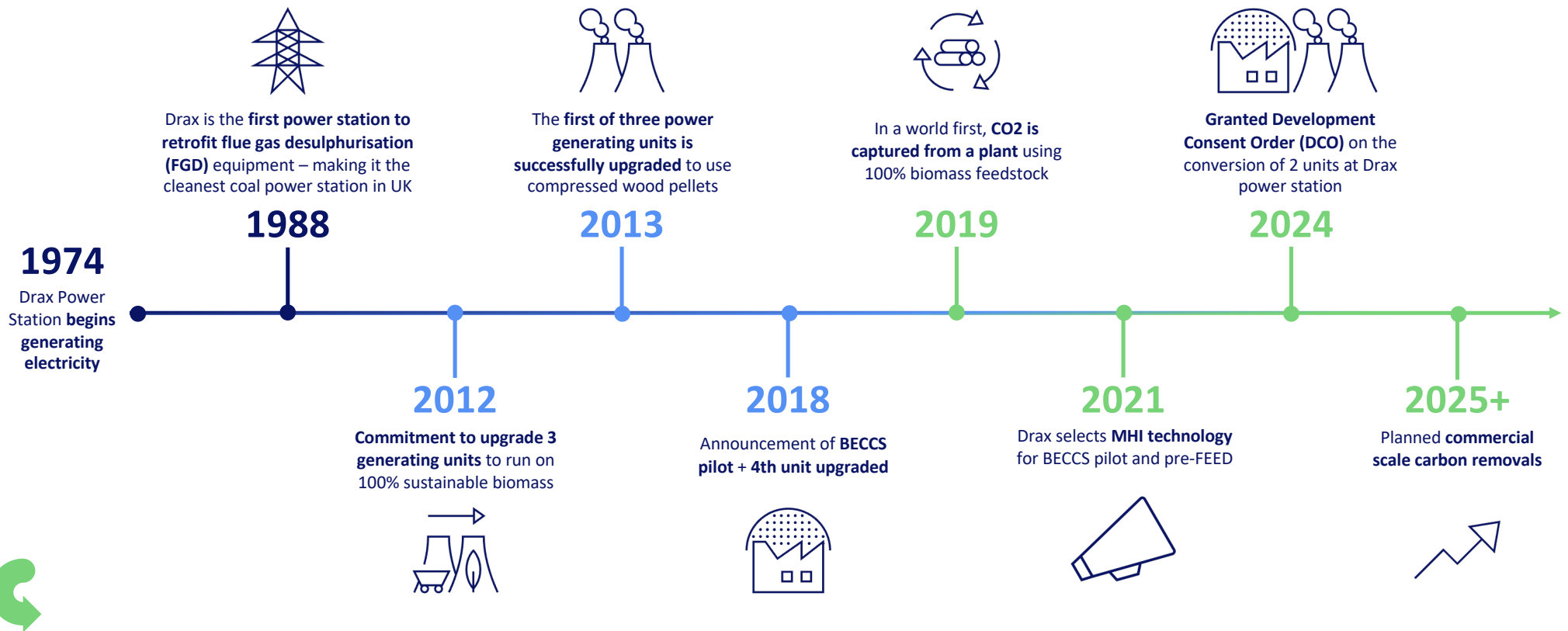


50 years of pushing boundaries

1.0 coal power

2.0 renewable power

3.0 carbon removals



How BECCS removes carbon dioxide from the atmosphere

drax

Carbon
Removals

Step one

Working forests are thinned and managed to increase health and ensure maximum carbon absorption

Step two

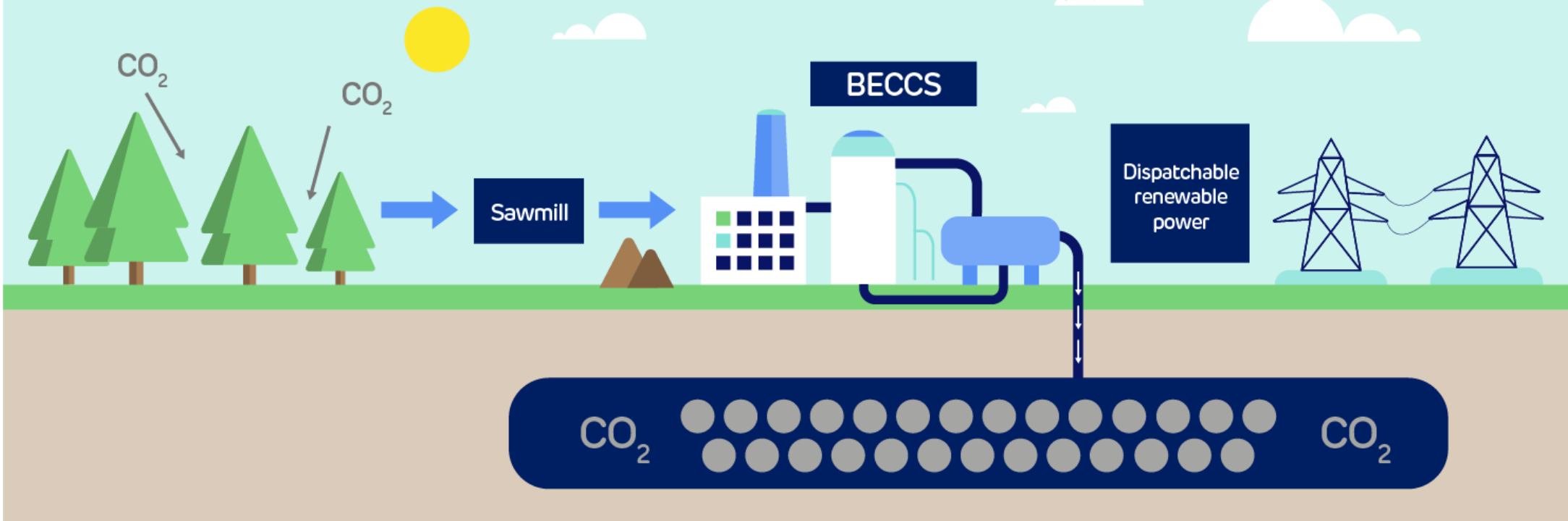
Biomass pellets are produced from low-grade roundwood and mill residues

Step three

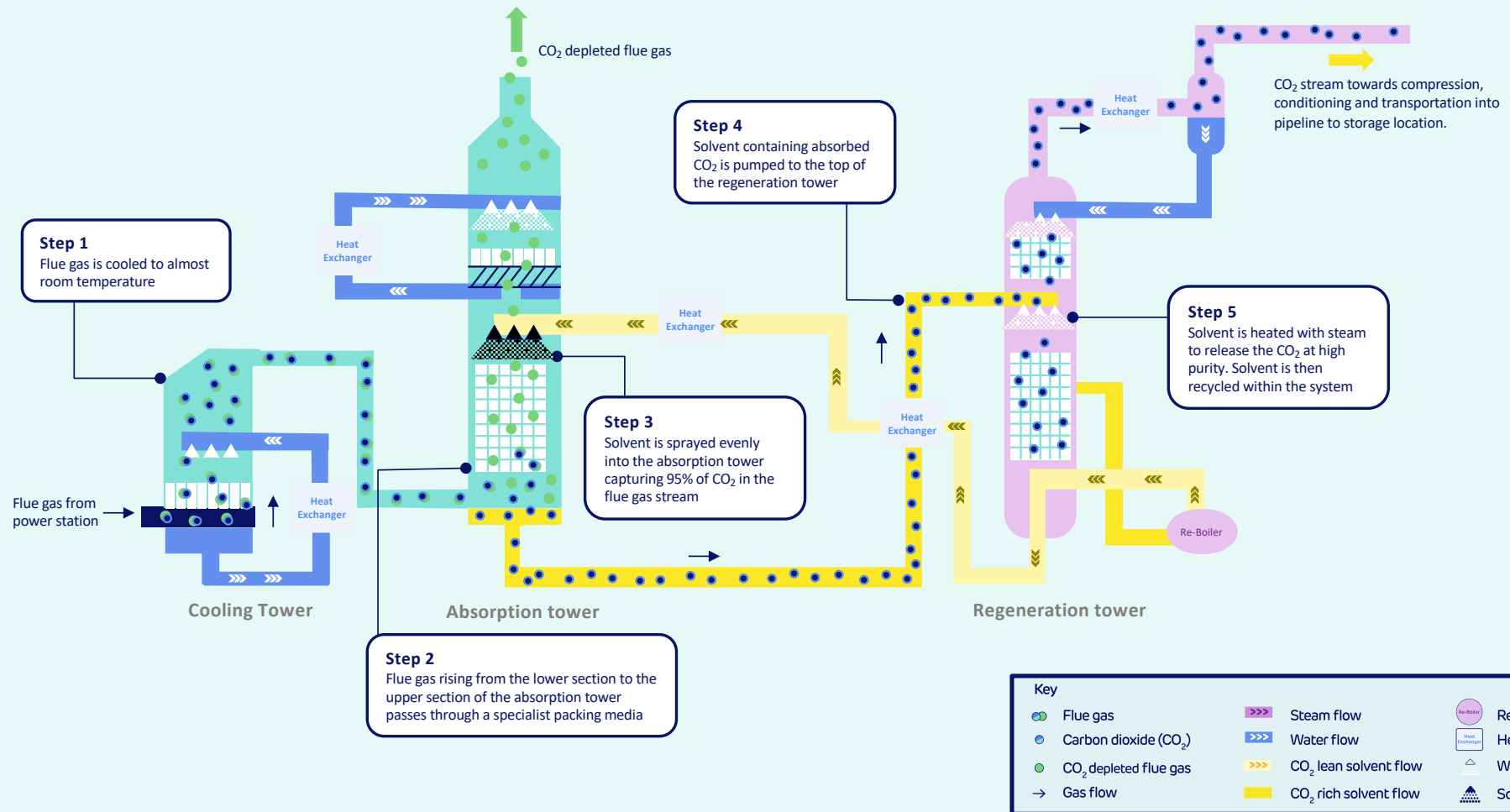
24/7 dispatchable renewable power is generated, and CO₂ from the trees separated from the flue gas

Step four

The BECCS technology captures and permanently stores CO₂ underground



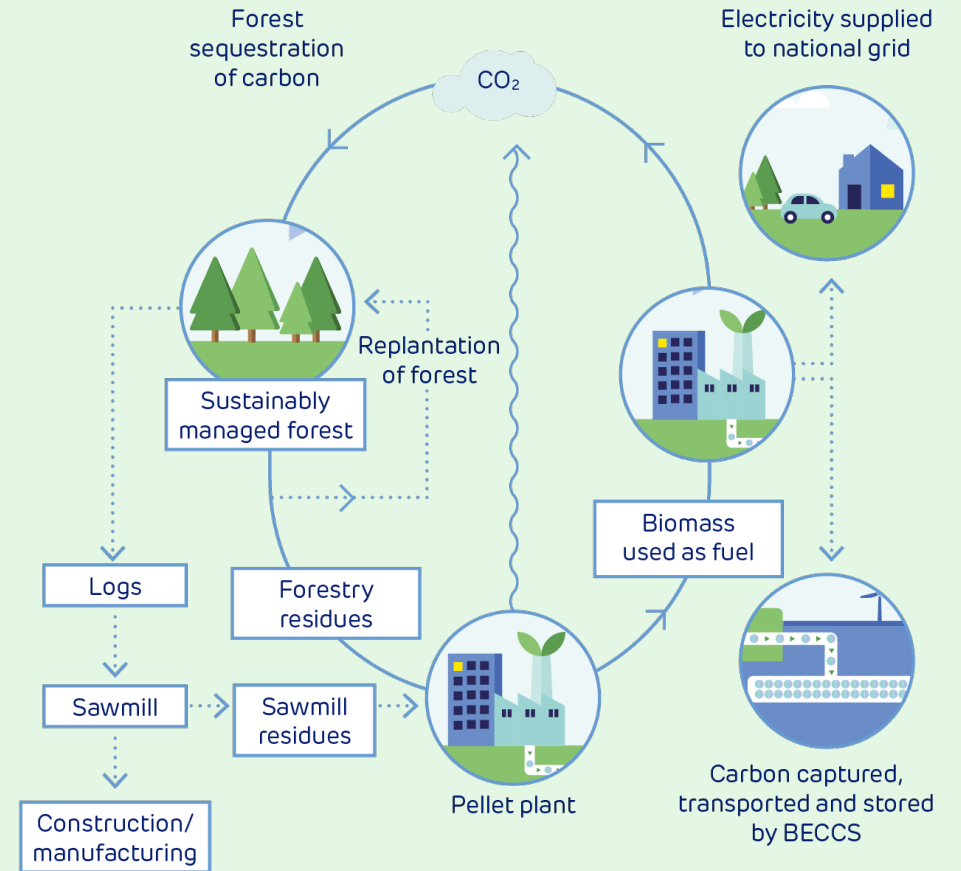
How CO₂ is captured in BECCS using Mitsubishi Heavy Industry technology



What is the closed carbon cycle?

Sustainable biomass is renewable when sourced within the closed carbon cycle.

CO₂ released from sustainable biomass operates within a “**biogenic carbon cycle**”. This is part of the continuous exchange of carbon between the land and the atmosphere.



Forests

Biomass

Carbon Removals

Chain of Custody

Sourcing standard: The material can be traced to the source of origin.

Forestry Management (FM) Forest-level certification

Each forest is certified to standards agreed by a multi-stakeholder group.

Controlled wood Sourcing standard

A Regional Risk Assessment (RRA) has been completed. This is an audit against listed risks for that forest region.

Sustainable Biomass Program Sourcing standard

The biomass sold and used is from known, well-managed forest regions. It has the required and accurate data, including carbon and other profiles.

BECCS methodology

Builds on forestry and biomass standards to ensure CDR credits meet all the requirements to prove that the CDR truly delivers negative emissions, including:

- Additional climate benefit
- Using biomass only from areas with stable or increasing forest carbon stock
- Durably stored carbon



Managed forests

- Forestry residues: branches, tops and thinnings

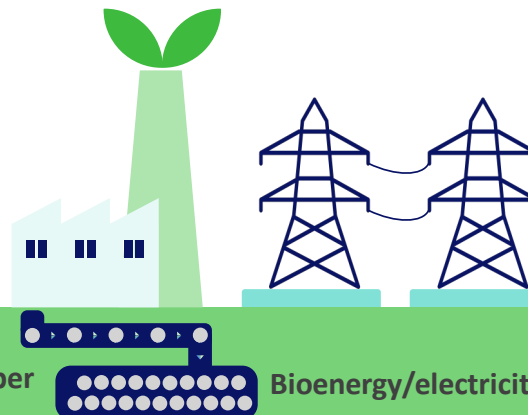


Controlled Wood

- Sawmill and other wood industry residues: chips, shavings & sawdust
- Low grade roundwood



Pellets and fiber



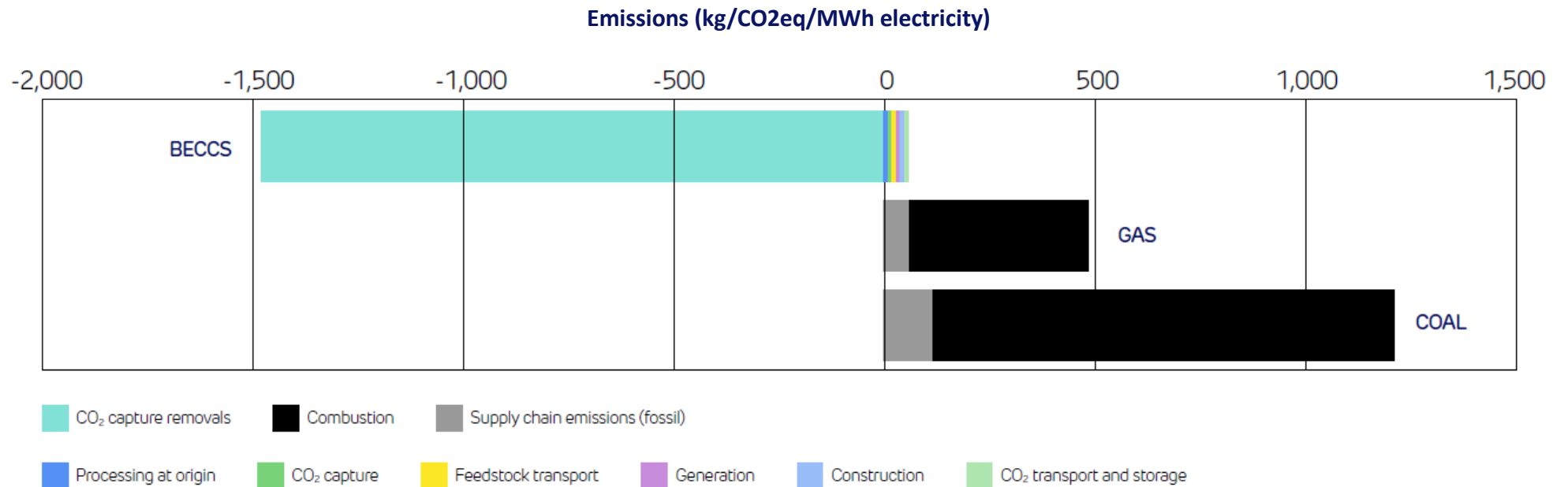
Bioenergy/electricity



Carbon removals

BECCS is a carbon negative technology

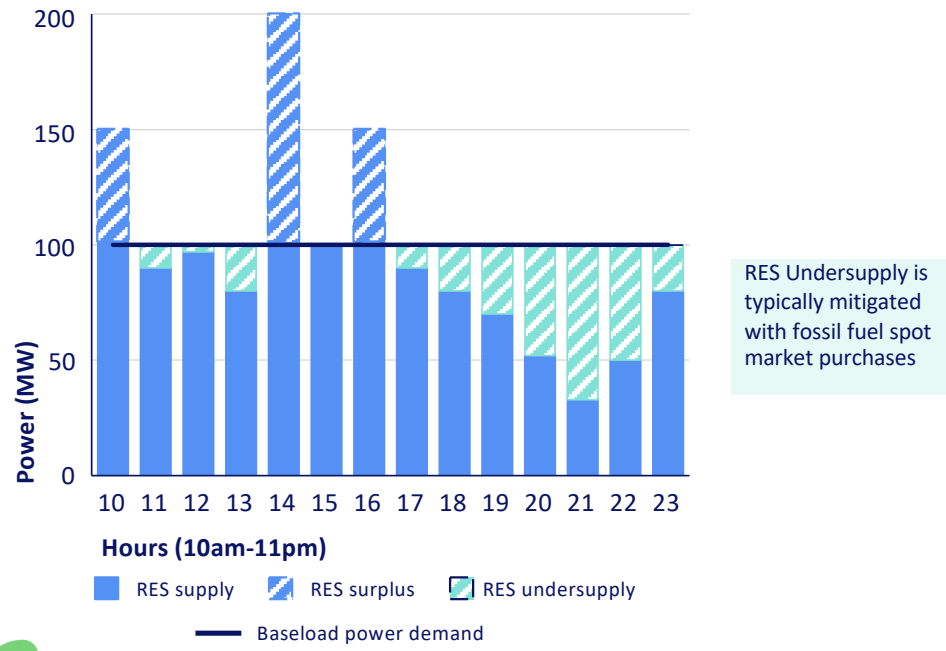
When adding CCS, bioenergy is highly net negative, delivering as much as 1.4tCO₂ net removal per MWh of power



BECCS provides carbon free power stability

Present

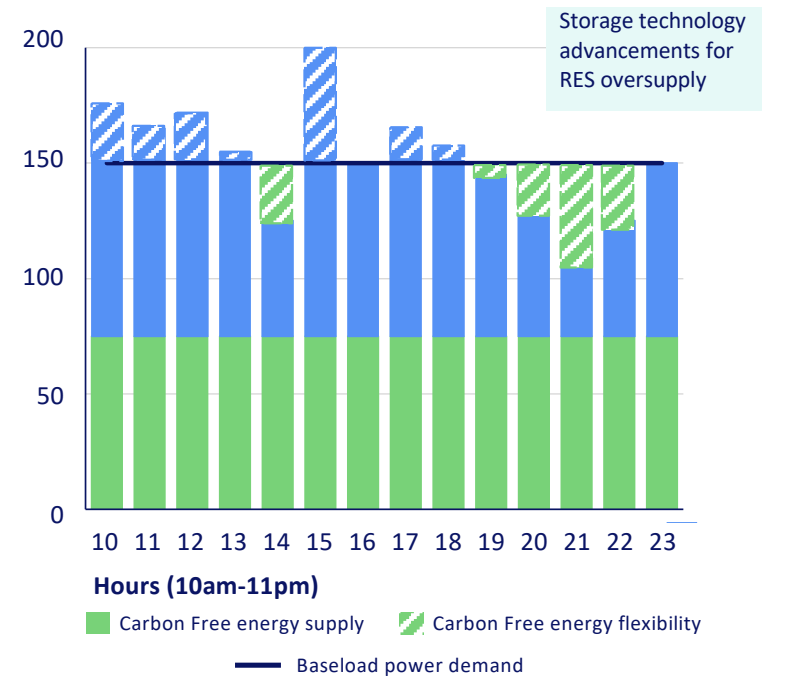
Energy matching with standard RES, e.g. wind & solar



*Illustrative modelling

Future

Energy matching utilising 24/7 BECCS



BECCS is a climate solution with multiple benefits

drax

Carbon
Removals

Only BECCS can deliver all of these benefits.

Underpinned by sustainable biomass practices.

- ✓ Carbon free energy generation
- ✓ Scalable and proven technology
- ✓ Time-matched energy provision
- ✓ Durable and permanent CO₂ storage
- ✓ Carbon removal credit generation
- ✓ Cost competitive engineered removals



The opportunities are endless with Drax

drax | Carbon Removals



We can provide renewable energy for your operations



We can remove CO₂ on your behalf/for your operations



We can be partners in developing a BECCS plant or explore fuel switching



You can provide biomass for BECCS and become part of our value chain



You can enhance decarbonization and energy security by investing with us



You can explore CO₂ utilization opportunities with us



Thank you

drax